

senproperties.com

1021
NORTH
BEVERLY DRIVE

BEVERLY HILLS



SEN PROPERTIES

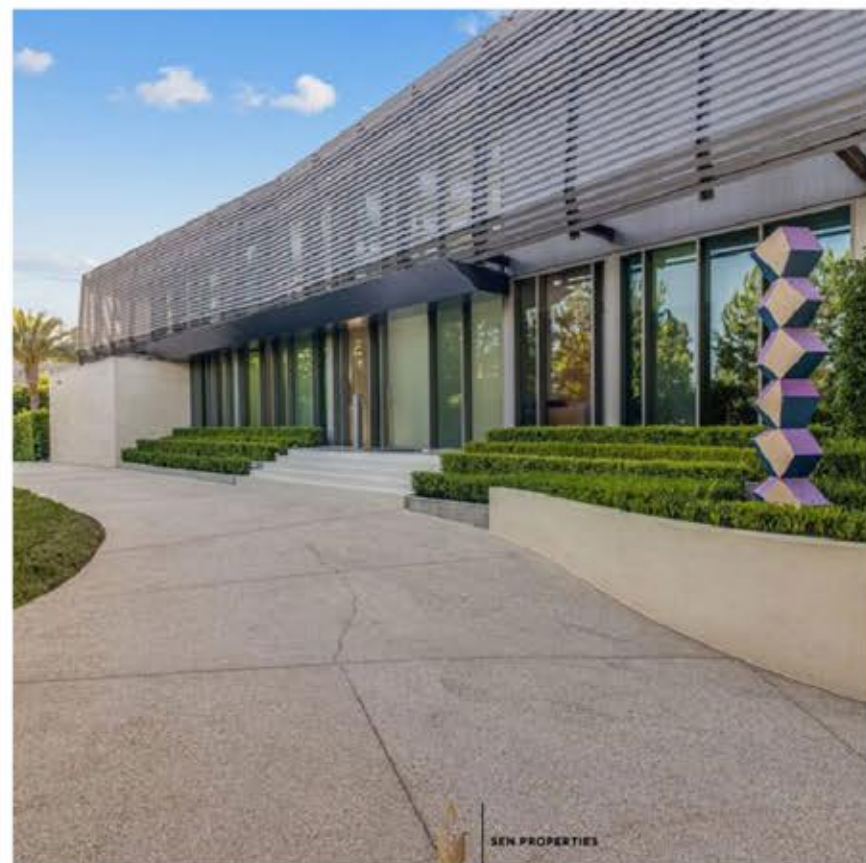


WE BELIEVE IN BEVERLY HILLS
SOPHISTICATED. REFINED. GRACIOUS.

BEVERLY HILLS. AS IT WAS INTENDED TO BE.
SEN PROPERTIES IS REVERED AS ONE OF THE PLATINUM TRIANGLE'S LEADING ULTRA LUXURIOUS PROPERTY DEVELOPERS; DEDICATED TO RECLAIMING BEVERLY HILLS AS THE MOST LIVABLE AND GLAMOROUS CITY IN THE WORLD.
FOUNDED AND HEADED BY ADNAN SEN, SEN PROPERTIES IS A LUXURY HOME DEVELOPER, WHO OFFERS THE BEST-IN-CLASS HOUSES IN BEVERLY HILLS. SETTING NEW STANDARDS IN ULTRA LUXURY REAL ESTATE INDUSTRY, SEN PROPERTIES BECAME THE TOUCHSTONE IN THE PLATINUM TRIANGLE BY WHICH DESIGN, ARCHITECTURE, ENERGY CONSERVATION AND TRENDS ARE JUDGED.
BY WORKING WITH THE BEST-IN-CLASS ARCHITECTS AND USING ONLY THE HIGHEST QUALITY OF MATERIALS, WE CREATE PROPERTIES THAT BRING UP THE OVERALL VALUE AND INTERNATIONAL APPEAL OF THE CITY OF BEVERLY HILLS.







SEN PROPERTIES









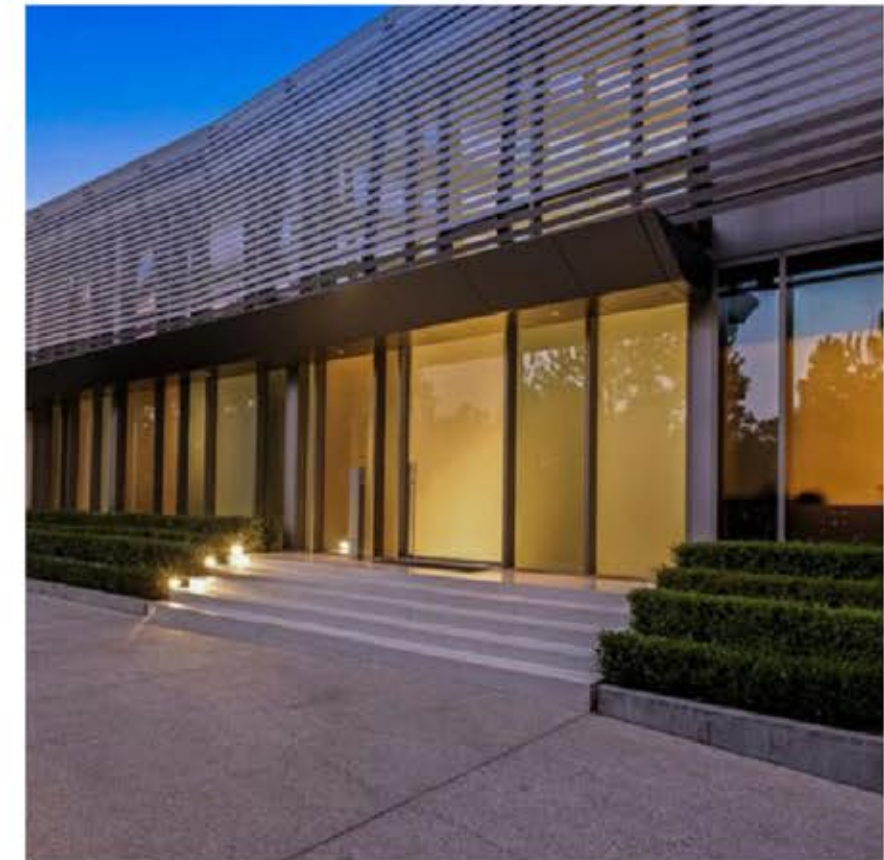


A SPRAWLING BEVERLY HILLS CONTEMPORARY ESTATE ON OVER 1 ACRE OF LAND, RECENTLY COMPLETED WITH METICULOUS ATTENTION TO DESIGN AND DETAIL.

DEVELOPED BY SEN PROPERTIES, THE *7 BEDS, 10 BATHS* MAIN RESIDENCE BOASTS **15,605 SQ. FT. OF STYLISH LIVING SPACES** INCLUDING AN ELEGANT FOYER, TOP-OF-THE-LINE CHEF'S KITCHEN, SLEEK DINING AND LIVING AREAS, STATE-OF-THE-ART MOVIE THEATER AND GYM, WINE CELLAR, A LAVISH OWNER'S SUITE WITH HIS-AND-HERS WALK-IN CLOSETS AND BATHROOMS. THE SEAMLESS INDOOR/OUTDOOR FLOW CREATES INVITING SPACES FOR ENTERTAINING AND RESORT-STYLE RELAXATION, INCLUDING AN OUTDOOR KITCHEN AND DINING AREA, ONE OF BEVERLY HILL'S BIGGEST AND MOST STUNNING POOLS, ALL WHILE SURROUNDED BY LUSH LANDSCAPING AND A HUGE GRASSY YARD.

OTHER UNIQUE FEATURES INCLUDE AN IMPRESSIVE FUTURISTIC AUTOMATED AWNING SURROUNDING THE PROPERTY WHICH CAN CONTROL THE NATURAL AMBIENT LIGHTING, AND A SEPARATE 2,690 SQ. FT. GUESTHOUSE WITH 2 BEDS, 2 BED, COMPLETING THIS SUPERB PRIVATE COMPOUND.

WWW.NORTH-BEVERLY-DRIVE.COM



SEN PROPERTIES